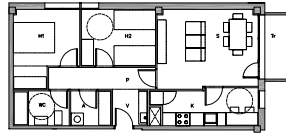


3. UNA TIPOLOGÍA DE VIVIENDA

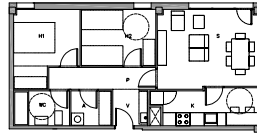
Todos las viviendas parten del mismo esquema; todas las viviendas son, en cierto modo, la misma vivienda. Se divide la planta en tres tiras longitudinales; a saber: dormitorios y sala (tira 1), pasillo (tira 2) y aseos, cuarto polivalente y cocina (tira 3). Se sitúa la sala en la esquina y la cocina en contacto con la fachada para ventilar directamente. Estas tres decisiones son suficientes para organizar la planta.

Las variaciones vienen dadas por:

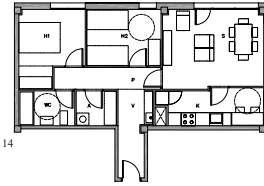
- 1- disposición irregular de los huecos con anchos distintos
- 2- construcción de 5 balcones en la calle mayor
- 3- patios en planta baja



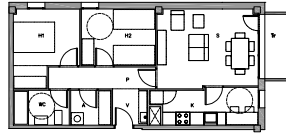
A 7B



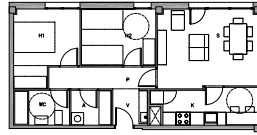
A 9



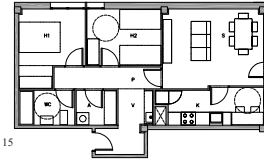
A 14



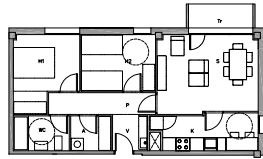
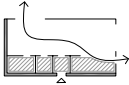
A 8B



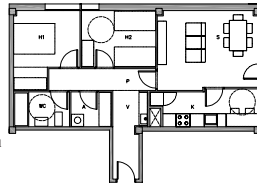
A 10



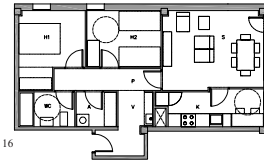
A 15



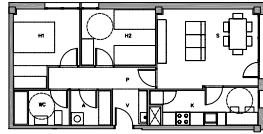
A 10B



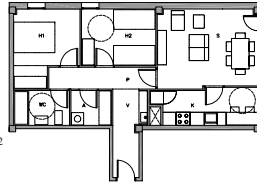
A 11



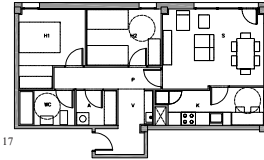
A 16



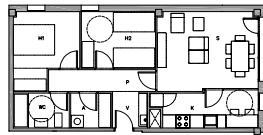
A 7



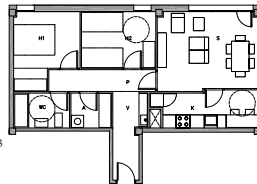
A 12



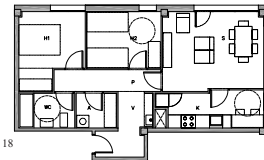
A 17



A 8



A 13



A 18